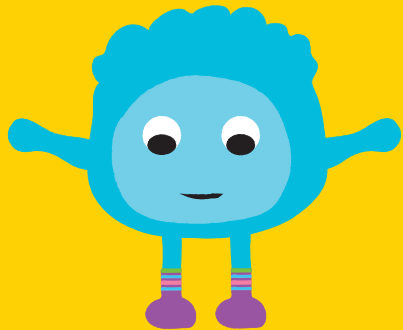


I am doing
MY BEST



I am
PROUD
of myself



You will need to **make a booking** to see these healthcare providers in the hospital. Sometimes there is a waiting period, so please make sure you **put in a request** at your earliest convenience. You can enquire about speaking to the healthcare provider of your choice by calling your cancer centre on the number below:

Bankstown Cancer Centre

☎ 9722 8606

Liverpool Cancer Therapy Centre

☎ 8738 5180

Macarthur Cancer Therapy Centre

☎ 4634 4300

SWSLHD – Cancer Services

🌐 www.swslhd.health.nsw.gov.au/cancer/multi.html



You can also contact
Cancer Council NSW on
13 11 20
for more support services.

**Who Do You
Need to Speak
to During Your
Cancer
Treatment?**



Did you know?

You can access a range of services when you are receiving cancer treatment in the South Western Sydney Local Health District.

SWSLHD Multicultural Health Service
Improving Patient & Carer Journey
Funded by Cancer Institute NSW Innovations in Cancer Control Grants 2021

MEET THE TEAM

Let's find out who these healthcare providers are. Select the ones you think you need to speak with, and ask for their contact details.



Dietitian

- Assesses patient's nutritional requirements and plans a suitable diet
- Provides education regarding any dietary changes which may be required

NAME:

CONTACT:

Physiotherapist

- Assists patients to achieve their maximum level of function, using exercise and mobility programs

NAME:

CONTACT:

Cancer Care Coordinator

- A senior specialist nurse who coordinates your care throughout diagnosis and treatment
- Works closely with the patient, the team, and other community resources to help patients during their cancer treatment. They are the main contact person to help with any questions or concerns you may have

NAME:

CONTACT:

Nurse

- Assesses patient's needs and provide day-to-day care
- Usually the best person to raise any unresolved patient-related concerns or issues with

NAME:

CONTACT:

Pharmacist

- Reviews medications during admission
- Provides education and medication charts to patients and carers/families, particularly at discharge

NAME:

CONTACT:

Speech Therapist

- Speech pathologists diagnose and manage people who have communication and/or swallowing difficulties
- They provide support and education on how to best manage these problems

NAME:

CONTACT:

Social Worker

- Supports patients and their carers/families in dealing with illness, trauma and hospitalisation
- Attends to emotional, psychological and social needs
- Provides information on residential care options and community support services

NAME:

CONTACT:

Psychologist

- Helps patients understand their emotional response to diagnosis and treatment
- Works out strategies for managing such concerns

NAME:

CONTACT:

Other

ROLE:

NAME:

CONTACT: